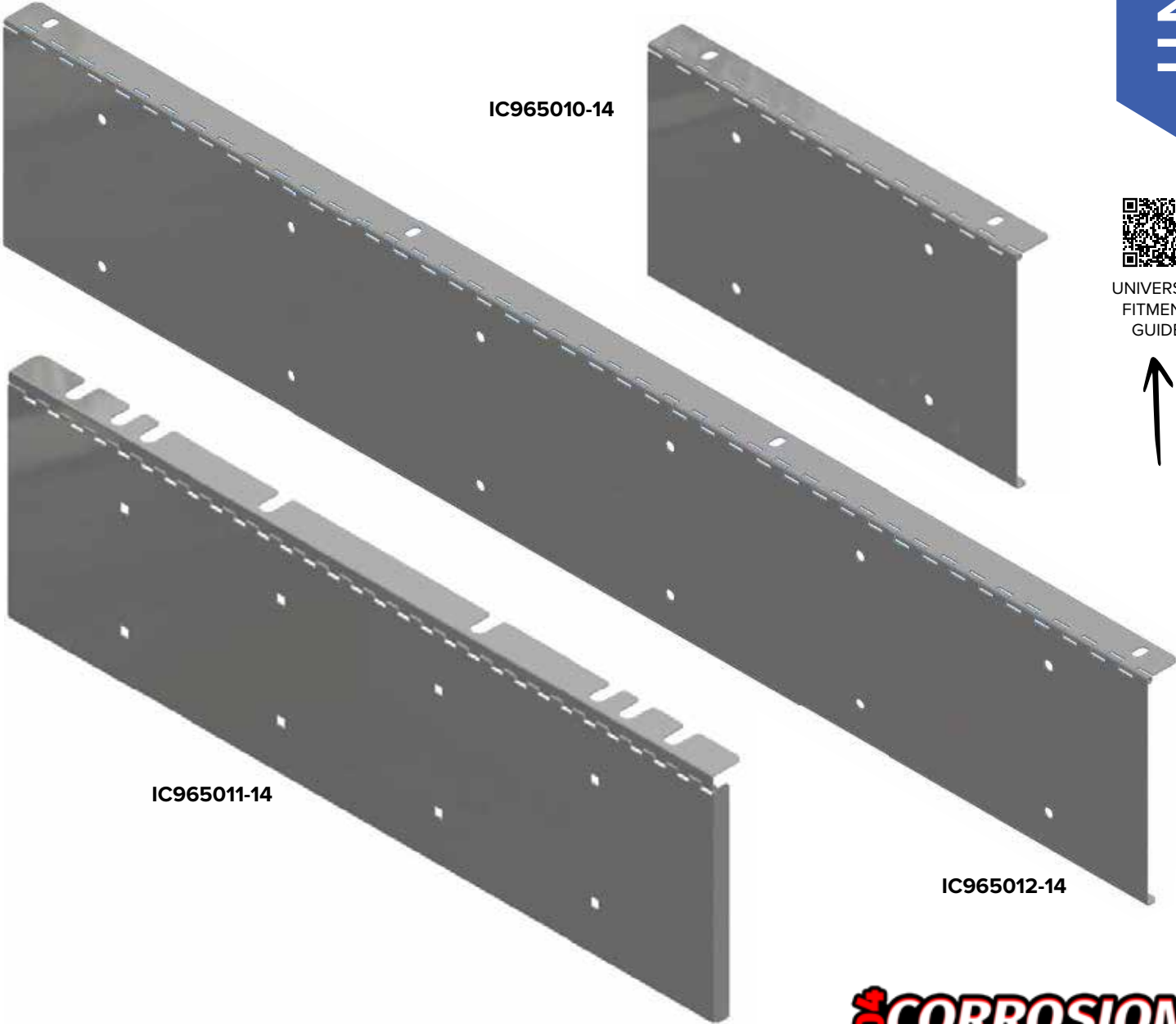


LICENSE PLATE HOLDERS

Designed specifically for displaying your License Plate! Expertly crafted from 304 Corrosion Resistant #8 Non-Directional Stainless Steel, these will stand up against all the elements. Sold individually.

UNIVERSAL



UNIVERSAL
FITMENT
GUIDE



PRODUCT INFORMATION

Part #	Product	Information	Finish	Fitment
IC965010-14	License Plate Holder	Hinged Single Plate	#8 304 Polished Stainless Steel	See QR Code
IC965011-14	License Plate Holder	Hinged Double Plate with Tow Pin Cover	#8 304 Polished Stainless Steel	See QR Code
IC965012-14	License Plate Holder	Hinged Triple Plate	#8 304 Polished Stainless Steel	See QR Code

GLOW KITS

Our patented Glow Kits create an even under glow... no "hot spots" here! The kits utilize 3/4 in. mini button lights and come in a variety of kits for any application! All Sleeper Only Kits and Sleeper and Cab Kits include brackets and mounting hardware.



UNIVERSAL
FITMENT
GUIDE



LIGHT OPTIONS (-xx)

Add light option number to end of part number for desired light color.
(ex: IC995999-14-97)

Part #	Product
97	Amber Lens / Amber LED Light Kit
96	Clear Lens / Amber LED Light Kit
95	Red Lens / Red LED
94	Clear Lens / Red LED
93	Dual Revolution - Amber/Blue
92	Dual Revolution - Amber/Green
91	Dual Revolution - Amber/Purple
90	Dual Revolution - Amber/Red
89	Dual Revolution - Amber/White
88	Dual Revolution - Red/Blue
87	Dual Revolution - Red/Green
86	Dual Revolution - Red/Purple
85	Dual Revolution - Red/White

PRODUCT INFORMATION

Fitment: See QR Code

Part #	Truck Fitment	Lights Needed	Finish
IC995999-14-xx	48 in. Sleeper and Cab	(42) 3/4 in.	#8 304 Polished Stainless Steel
IC995998-14-xx	63 in. & 70 in. Sleeper and Cab	(48) 3/4 in.	#8 304 Polished Stainless Steel
IC995997-14-xx	48 in. Sleeper Only	(30) 3/4 in.	#8 304 Polished Stainless Steel
IC995996-14-xx	63 in. & 70 in. Sleeper Only	(36) 3/4 in.	#8 304 Polished Stainless Steel
IC995995-14-xx	16 ft. Single Truck Frame 8 ft. of Glow Kit Brackets for Frame Installation on Both Sides	(48) 3/4 in.	#8 304 Polished Stainless Steel
IC995994-14-xx	20 ft. Single Truck Frame 10 ft. of Glow Kit Brackets for Frame Installation on Both Sides	(60) 3/4 in.	#8 304 Polished Stainless Steel
IC995993-14-xx	24 ft. Single Truck Frame 12 ft. of Glow Kit Brackets for Frame Installation on Both Sides	(72) 3/4 in.	#8 304 Polished Stainless Steel
IC995992-14-xx	16 ft. Double Truck Frame 8 ft. of Glow Kit Brackets for Frame Installation on Both Sides	(48) 3/4 in.	#8 304 Polished Stainless Steel
IC995991-14-xx	20 ft. Double Truck Frame 10 ft. of Glow Kit Brackets for Frame Installation on Both Sides	(60) 3/4 in.	#8 304 Polished Stainless Steel
IC995990-14-xx	24 ft. Double Truck Frame 12 ft. of Glow Kit Brackets for Frame Installation on Both Sides	(72) 3/4 in.	#8 304 Polished Stainless Steel
IC995001-14-xx	12 in. Glow Kit Section	(3) 3/4 in.	#8 304 Polished Stainless Steel
IC995002-14-xx	24 in. Glow Kit Section	(6) 3/4 in.	#8 304 Polished Stainless Steel
IC995003-14-xx	Glow Kit Frame Clamps - Single Frame	N/A	#8 304 Polished Stainless Steel
IC995004-14-xx	Glow Kit Frame Clamps - Double Frame	N/A	#8 304 Polished Stainless Steel

33 IN. LIGHT BARS



UNIVERSAL

The Iowa Customs Rear Light Bars are manufactured from either 16GA #8 304 Non-Directional Polished Stainless Steel or Paintable Finish with a Gasketed, Rear Back Plate and our integrated gussets. Multiple designs are available! All Rear Light Bars DO NOT come with the lights.



UNIVERSAL
FITMENT
GUIDE



IC983026-14

IC983028-14

IC983025-14

IC983027-14



PRODUCT INFORMATION

Fitment: See QR Code

Part #	Light Bar Size	Light Holes	Hook-Up Information
IC983025-xx	33 in. x 8-1/2 in.	(4) 4 in. Round	None
IC983026-xx	33 in. x 8-1/2 in.	(2) 4 in. Round	Trailer Air with (1) 7-Way Hook-Up
IC983027-xx	33 in. x 8-1/2 in.	(4) 6-1/2 in. x 2-1/4 in. Oval	None
IC983028-xx	33 in. x 8-1/2 in.	(4) 6-1/2 in. x 2-1/4 in. Oval	Trailer Air with (1) 7-Way Hook-Up

FINISH OPTIONS (-xx)

Add finish option number to end of part number for desired finish.
(ex: IC983025-14)

Part #	Finish
14	#8 304 Non-Directional Polished Stainless Steel
21	Paintable Finish

96 IN. LIGHT BARS

Iowa Customs 96 in. Light Bars are expertly crafted and manufactured from 14GA #8 304 Non-Directional Polished Stainless Steel. These are engineered with internal structure to help eliminate fatigue areas. Includes gasketed rear access panel, gussets and integrated flap hangers. Custom light configurations are available.



UNIVERSAL
FITMENT
GUIDE



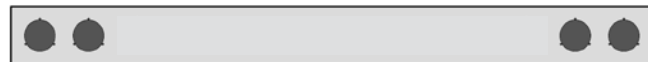
96 in. Light Bar with (13) 4 in. Round Light Holes



96 in. Light Bar with (8) 4 in. Round Light Holes



96 in. Light Bar with (6) 4 in. Round Light Holes



96 in. Light Bar with (4) 4 in. Round Light Holes



96 in. Light Bar with (2) 4 in. and (28) 3/4 in. Round Light Holes



96 in. Light Bar with (4) 4 in. and (22) 3/4 in. Round Light Holes



96 in. Light Bar with (6) 4 in. and (17) 3/4 in. Round Light Holes

PRODUCT INFORMATION

Part #	Light Bar Size	Light Holes	Finish	Fitment
IC983040-14	96 in. x 8-1/2 in.	(13) 4 in. Round	#8 304 Polished Stainless Steel	See QR Code
IC983041-14	96 in. x 8-1/2 in.	(8) 4 in. Round	#8 304 Polished Stainless Steel	See QR Code
IC983042-14	96 in. x 8-1/2 in.	(6) 4 in. Round	#8 304 Polished Stainless Steel	See QR Code
IC983043-14	96 in. x 8-1/2 in.	(4) 4 in. Round	#8 304 Polished Stainless Steel	See QR Code
IC983044-14	96 in. x 8-1/2 in.	(2) 4 in. & (28) 3/4 in. Round	#8 304 Polished Stainless Steel	See QR Code
IC983045-14	96 in. x 8-1/2 in.	(4) 4 in. & (22) 3/4 in. Round	#8 304 Polished Stainless Steel	See QR Code
IC983046-14	96 in. x 8-1/2 in.	(6) 4 in. & (17) 3/4 in. Round	#8 304 Polished Stainless Steel	See QR Code

Custom
OPTIONS AVAILABLE

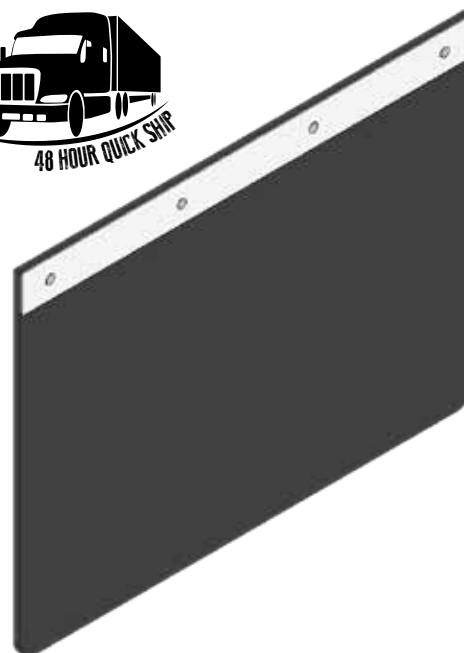
TOP MUD FLAP ACCENTS



Increase the looks of your mud flap with Iowa Customs high quality Top Mud Flap Accents. Made from 14GA #8 304 Non-Directional Polished Stainless Steel. Fits any 24 in. wide flap and includes hardware.

PRODUCT INFORMATION

Part #	Dimensions	Finish	Fitment
IC974010-14	2 in. x 24 in.	#8 304 Polished Stainless Steel	See QR Code



UNIVERSAL

ANTI-SAILS

Iowa Customs 14GA #8 304 Non-Directional Polished Stainless Steel Anti-Sail Brackets are engineered with the top flap mount for an integrated and sleek design. Sold in pairs. Includes hardware.



UNIVERSAL
FITMENT
GUIDE



PRODUCT INFORMATION

Part #	Size	Flap Information	Finish	Fitment
IC974001-14	14 in. x 14 in.	2 in. x 24 in.	#8 304 Polished Stainless Steel	See QR Code
IC974002-14	14 in. x 14 in.	2 in. x 24 in.	#8 304 Polished Stainless Steel	See QR Code
IC974003-14	12 in. x 14 in.	-	#8 304 Polished Stainless Steel	See QR Code
IC974004-14	11 in. x 20 in.	-	#8 304 Polished Stainless Steel	See QR Code
IC974005-14	9 in. x 7.5 in.	-	#8 304 Polished Stainless Steel	See QR Code

REAR FENDER GUARDS

Iowa Customs Rear Fender Guards are the perfect addition to the rear of your fiberglass fenders. Expertly crafted from 14GA #8 304 Non-Directional Corrosion Resistant Stainless Steel, these will safeguard the rear side of your fiberglass fenders from everyday elements. Sold in Pairs.

PRODUCT INFORMATION

Fitment: See QR Code

Part #	Dimensions	Finish
IC974030-14	20 in. L x 5 in. H	#8 304 Polished Stainless Steel



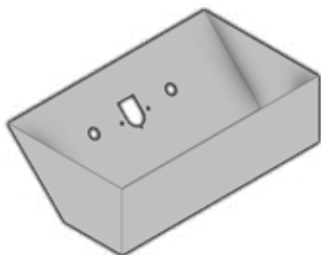
DECK PLATE ACCESSORIES

The Iowa Customs deck plate accessories are built using top-of-the line materials. All of our accessories come complete, which means all mounting, back plates and mounting flanges are included!

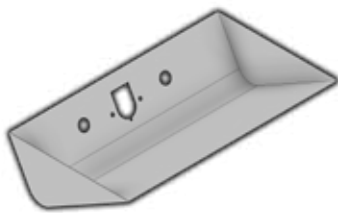
RECESSED AIRLINE BOX PROFILES:



UNIVERSAL
FITMENT
GUIDE



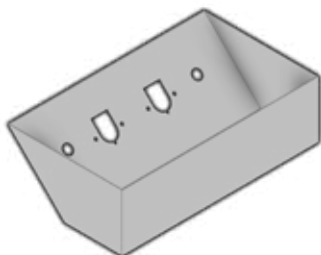
45° Design:
Trailer Air & (1) 7-Way
IC987007



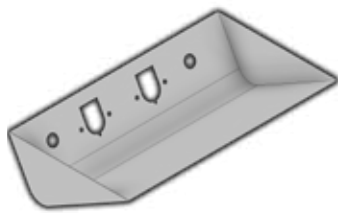
7 Design:
Trailer Air & (1) 7-Way
IC987015



Radius Bottom Design:
Trailer Air & (1) 7-Way
IC987011



45° Design:
Trailer Air & (2) 7-Ways
IC987008



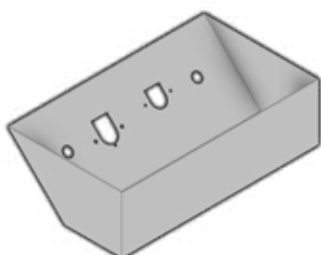
7 Design:
Trailer Air & (2) 7-Ways
IC987016



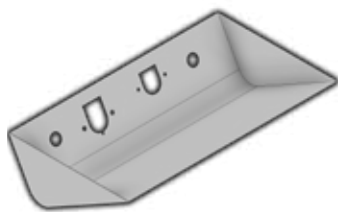
Radius Bottom:
Trailer Air & (2) 7-Ways
IC987012



45° Front



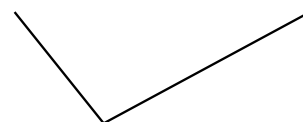
45° Design:
Trailer Air, (1) 7-Way & (1) 4/6-Way
IC987009



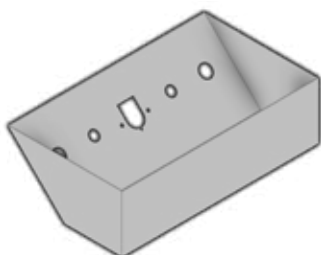
7 Design: Trailer Air,
(1) 7-Way & (1) 4/6-Way
IC987017



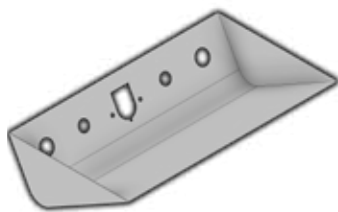
Radius Bottom Design:
Trailer Air, (1) 7-Way & (1) 4/6-Way
IC987013



7 Design



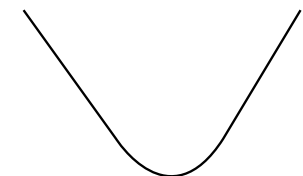
45° Design: Trailer Air,
(1) 7-Way & Hydraulic Hook-Ups
IC987010



7 Design: Trailer Air,
(1) 7-Way & Hydraulic Hook-Ups
IC987018

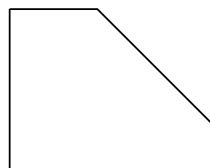


Radius Bottom Design: Trailer Air,
(1) 7-Way & Hydraulic Hook-Ups
IC987014



Radius Bottom

RECESSED AIRLINE BOX PROFILES:



On Top ALB Design:
Trailer Air & (1) 7-Way
IC987002



On Top ALB Design:
Trailer Air & (2) 7-Ways
IC987003



On Top ALB Design:
Trailer Air, (1) 7-Way & (2) hydraulic hook-ups
IC987004



On Top ALB Design:
Trailer Air, (1) 7-Way & (2) 4 in. Light Holes
IC987005



Custom Hole Layout



UNIVERSAL
FITMENT
GUIDE



PRODUCT INFORMATION

Part #	Information	Hook-Ups	Fitment
IC987000-xx	On-Top Airline Box	Blank - No Holes	See QR Code
IC987001-xx	On-Top Airline Box with Trailer Air	(1) 7-Way & (1) 4/6-Way Hook-Up	See QR Code
IC987002-xx	On-Top Airline Box with Trailer Air	(1) 7-Way	See QR Code
IC987003-xx	On-Top Airline Box with Trailer Air	(2) 7-Ways	See QR Code
IC987004-xx	On-Top Airline Box with Trailer Air	Hydraulic Hook-Ups & (1) 7-Way	See QR Code
IC987005-xx	On-Top Airline Box with Trailer Air	(1) 7-Way & (2) 4 in. Light Holes	See QR Code
IC987006-xx	On-Top Airline Box with Trailer Air	(2) 7-Way & (2) 4 in. Light Holes	See QR Code
IC987007-xx	Recessed Airline Box - 45° Front	Trailer Air & (1) 7-Way Hook-Up	See QR Code
IC987008-xx	Recessed Airline Box - 45° Front	Trailer Air & (2) 7-Way Hook-Ups	See QR Code
IC987009-xx	Recessed Airline Box - 45° Front	Trailer Air, (1) 7-Way & (1) 4/6-Way Hook-Up	See QR Code
IC987010-xx	Recessed Airline Box - 45° Front	Hydraulic, Trailer Air & (1) 7-Way Hook-Up	See QR Code
IC987011-xx	Recessed Airline Box - Radius Bottom	Trailer Air & (1) 7-Way Hook-Up	See QR Code
IC987012-xx	Recessed Airline Box - Radius Bottom	Trailer Air & (2) 7-Way Hook-Ups	See QR Code
IC987013-xx	Recessed Airline Box - Radius Bottom	Trailer Air, (1) 7-Way & (1) 4/6-Way Hook-Up	See QR Code
IC987014-xx	Recessed Airline Box - Radius Bottom	Hydraulic, Trailer Air & (1) 7-Way Hook-Up	See QR Code
IC987015-xx	Recessed Airline Box - Series "7"	Trailer Air & (1) 7-Way Hook-Up	See QR Code
IC987016-xx	Recessed Airline Box - Series "7"	Trailer Air & (2) 7-Way Hook-Ups	See QR Code
IC987017-xx	Recessed Airline Box - Series "7"	Trailer Air, (1) 7-Way & (1) 4/6-Way Hook-Up	See QR Code
IC987018-xx	Recessed Airline Box - Series "7"	Hydraulic, Trailer Air & (1) 7-Way Hook-Up	See QR Code

FINISH OPTIONS (-xx)

Add finish option number to end of part number for desired finish. (ex: IC987000-14)

Part #	Finish
14	#8 304 Polished Stainless Steel
21	Paintable Finish

WATERMELON LIGHT ADAPTER KITS



Iowa Customs 4 in. light conversion kit makes installing a watermelon light into any 4 in. round light hole, a breeze. Pre-assembled for ease of installation, these are available with or without Trux watermelon lights.



UNIVERSAL
FITMENT
GUIDE



IC966001-14



IC966002-14



IC966003-14

PRODUCT INFORMATION

#1 Seller

Fitment: See QR Code

Part #	Size	Plate	Light Color	Finish
IC966001-14	4 in.	Bezel, Adapter Plate	No Light	#8 304 Polished Stainless Steel
IC966002-14	4 in.	Bezel, Adapter Plate with Trux Red Lens	Red LED Watermelon Light	#8 304 Polished Stainless Steel
IC966003-14	4 in.	Bezel, Adapter Plate with Trux Clear Lens	Red LED Watermelon Light	#8 304 Polished Stainless Steel

IFTA PERMIT HOLDERS



UNIVERSAL

The 304 #8 304 Non-Directional Polished Stainless Steel IFTA Permit Holders provide the best way to display your permits. Adhesive mounting for Universal applications and flange mounting available! Fits 1-5/8 in. exhaust clamp on-center bolt spacings.



304 CORROSION RESISTANT
304 Stainless Steel | Rust Free | Weather Proof

PRODUCT INFORMATION

Part #	Holder Information	Mount Information	Finish	Fitment
IC985001-14	Universal Mount Permit Holder	4 in. x 8 in. Adhesive Mount	#8 304 Polished Stainless Steel	See QR Code
IC985002-14	Universal Mount IFTA Permit Holder	4 in. x 4 in. Adhesive Mount	#8 304 Polished Stainless Steel	See QR Code
IC985003-14	Universal Mount IFTA Permit Holder	4 in. x 4 in. Bolt Mount	#8 304 Polished Stainless Steel	See QR Code
IC985004-14	Universal Mount IFTA Holder	8 in. x 13 in. Adhesive Mount	#8 304 Polished Stainless Steel	See QR Code
IC985005-14	Universal Mount IFTA Permit Holder	Lower Exhaust Clamp Mounted	#8 304 Polished Stainless Steel	See QR Code
IC985007-14	Universal Mount IFTA Permit Holder	4 in. x 4 in. Hinged Permit Panel	#8 304 Polished Stainless Steel	See QR Code
IC985008-14	Universal Mount IFTA Permit Holder	5 in. x 12 in. Hinged Permit Panel	#8 304 Polished Stainless Steel	See QR Code
IC985009-14	Universal Mount IFTA Permit Holder	5 in. x 4 in. Hinged Permit Panel	#8 304 Polished Stainless Steel	See QR Code

FLAP WEIGHTS



Our patented Curl Free Flap Weight System, made from 16GA #8 304 Non-Directional Polished Stainless Steel, eliminates the dreaded mud flap curl. The system's double bend design with an interlocking back plate assures years of use and comes with all polished stainless steel mounting hardware!



Rectangle Design



Tapered Design

304 CORROSION RESISTANT
304 Stainless Steel | Rust Free | Weather Proof



UNIVERSAL
FITMENT
GUIDE

PRODUCT INFORMATION

Fitment: See QR Code

Part #	Size	Flap Fitment	Information	Finish
IC989001-14	3 in. x 12 in. Tapered Design	Fits 0 in. - 1/2 in. Thick Flap	Sold in Pairs	#8 304 Polished Stainless Steel
IC989002-14	3 in. x 14 in. Tapered Design	Fits 0 in. - 1/2 in. Thick Flap	Sold in Pairs	#8 304 Polished Stainless Steel
IC989003-14	3 in. x 16 in. Tapered Design	Fits 0 in. - 1/2 in. Thick Flap	Sold in Pairs	#8 304 Polished Stainless Steel
IC989004-14	3 in. x 18 in. Tapered Design	Fits 0 in. - 1/2 in. Thick Flap	Sold in Pairs	#8 304 Polished Stainless Steel
IC989005-14	3 in. x 20 in. Tapered Design	Fits 0 in. - 1/2 in. Thick Flap	Sold in Pairs	#8 304 Polished Stainless Steel
IC989006-14	3 in. x 24 in. Tapered Design	Fits 0 in. - 1/2 in. Thick Flap	Sold in Pairs	#8 304 Polished Stainless Steel
IC989007-14	4 in. x 12 in. Tapered Design	Fits 0 in. - 1/2 in. Thick Flap	Sold in Pairs	#8 304 Polished Stainless Steel
IC989008-14	4 in. x 14 in. Tapered Design	Fits 0 in. - 1/2 in. Thick Flap	Sold in Pairs	#8 304 Polished Stainless Steel
IC989009-14	4 in. x 16 in. Tapered Design	Fits 0 in. - 1/2 in. Thick Flap	Sold in Pairs	#8 304 Polished Stainless Steel
IC989010-14	4 in. x 18 in. Tapered Design	Fits 0 in. - 1/2 in. Thick Flap	Sold in Pairs	#8 304 Polished Stainless Steel
IC989011-14	4 in. x 20 in. Tapered Design	Fits 0 in. - 1/2 in. Thick Flap	Sold in Pairs	#8 304 Polished Stainless Steel
IC989012-14	4 in. x 24 in. Tapered Design	Fits 0 in. - 1/2 in. Thick Flap	Sold in Pairs	#8 304 Polished Stainless Steel
IC989013-14	5 in. x 18 in. Tapered Design	Fits 0 in. - 1/2 in. Thick Flap	Sold in Pairs	#8 304 Polished Stainless Steel
IC989014-14	5 in. x 24 in. Tapered Design	Fits 0 in. - 1/2 in. Thick Flap	Sold in Pairs	#8 304 Polished Stainless Steel
IC989015-14	6 in. x 24 in. Tapered Design	Fits 0 in. - 1/2 in. Thick Flap	Sold in Pairs	#8 304 Polished Stainless Steel
IC989016-14	7 in. x 24 in. Tapered Design	Fits 0 in. - 1/2 in. Thick Flap	Sold Individually	#8 304 Polished Stainless Steel
IC989017-14	8 in. x 24 in. Tapered Design	Fits 0 in. - 1/2 in. Thick Flap	Sold Individually	#8 304 Polished Stainless Steel
IC989018-14	9 in. x 24 in. Tapered Design	Fits 0 in. - 1/2 in. Thick Flap	Sold Individually	#8 304 Polished Stainless Steel
IC989025-14	2 in. x 12 in. Rectangle Design	Fits 0 in. - 1/2 in. Thick Flap	Sold in Pairs	#8 304 Polished Stainless Steel
IC989026-14	2 in. x 14 in. Rectangle Design	Fits 0 in. - 1/2 in. Thick Flap	Sold in Pairs	#8 304 Polished Stainless Steel
IC989027-14	2 in. x 16 in. Rectangle Design	Fits 0 in. - 1/2 in. Thick Flap	Sold in Pairs	#8 304 Polished Stainless Steel
IC989028-14	2 in. x 18 in. Rectangle Design	Fits 0 in. - 1/2 in. Thick Flap	Sold in Pairs	#8 304 Polished Stainless Steel
IC989029-14	2 in. x 20 in. Rectangle Design	Fits 0 in. - 1/2 in. Thick Flap	Sold in Pairs	#8 304 Polished Stainless Steel
IC989030-14	2 in. x 24 in. Rectangle Design	Fits 0 in. - 1/2 in. Thick Flap	Sold in Pairs	#8 304 Polished Stainless Steel

Fitment: See QR Code



UNIVERSAL FITMENT GUIDE



www.iowacustoms.com

SLIDE-IN RAIL DECK PLATE ACCESSORIES



The Slide-In Rail Deck Plate accessory line from Iowa Customs allows for the simple addition of a Recessed Airline Box and Storage Box into the Merritt Dyna Deck Plate System. Expertly crafted from Aluminum.

All Merritt Dyna Deck System Components now available as an extra deck plate kit from Iowa Customs.



UNIVERSAL
FITMENT
GUIDE



PRODUCT INFORMATION

Part #	Information	Finish	Fitment
IC991037-21	Slide-In Rail Recessed Airline Box with TAIR-7W-TAIR Configuration	Smooth Aluminum	See QR Code
IC991038-21	Slide-In Rail Recessed Airline Box with TAIR-7W-7W-TAIR Configuration	Smooth Aluminum	See QR Code
IC991039-21	Slide-In Rail Recessed Airline Box with TAIR-7W-4/6W-TAIR Configuration	Smooth Aluminum	See QR Code
IC991040-21	Slide-In Rail Recessed Airline Box with Hyd-TAIR-7W-TAIR-Hyd Configuration	Smooth Aluminum	See QR Code
IC991041-21	Slide-In Rail 14 in. x 22 in. Recessed Storage Box	Smooth Aluminum	See QR Code

IN-FRAME DECK PLATES

Our patented In-Frame Deck Plate System is flush-mounted in between the frame for that super smooth look. Installation is simple with our revolutionary mounting clip design! We stock 36 in. - 96 in. deck plates, but if you're looking for a custom length or configuration, just contact us!



UNIVERSAL



UNIVERSAL
FITMENT
GUIDE



PRODUCT INFORMATION

Part #	In-Frame Deck Plate Size	Fitment
IC993001-xx	26-7/8 in. W x 36 in. L	See QR Code
IC993002-xx	26-7/8 in. W x 48 in. L	See QR Code
IC993003-xx	26-7/8 in. W x 60 in. L	See QR Code
IC993004-xx	26-7/8 in. W x 72 in. L	See QR Code
IC993005-xx	26-7/8 in. W x 84 in. L	See QR Code
IC993006-xx	26-7/8 in. W x 96 in. L	See QR Code

FINISH OPTIONS (-xx)

Add finish option number to end of part number for desired finish. (ex: IC993001-14)

Part #	Finish
14	#8 304 Polished Stainless Steel
20	Diamond Tread
21	Smooth Aluminum

Custom
OPTIONS AVAILABLE



CUSTOM DECK PLATES

CUSTOM DECK PLATE OPTIONS

- One Piece Deck Plate Up To 13 ft.-6 in.

Finishes: Smooth Aluminum or #8 304 Non-Directional Polished Stainless Steel

STORAGE BOXES

- 14 in. L x 22 in. W x 8 in. H Storage Box with Convenience LED Light
- 28 in. L x 22 in. W x 8 in. H Storage Box with Convenience LED Light
- Storage boxes not sold separately. Storage boxes are sold through custom deck plate orders only.

AIRLINE BOX OPTIONS

- Mini-Recessed Airline Box
- Recessed Airline Box
- On-Top Airline Box



UNIVERSAL
FITMENT
GUIDE



ON-FRAME SECTIONALIZED DECK PLATES

UNIVERSAL

Our patented Sectionalized Deck Plate System allows the mixing and matching of our recessed airline boxes and storage boxes to achieve the ultimate customized design look! This system installs on top of the frame with our patented mounting system for ease of mounting.

- Fits any truck with an outside frame measurement of 34 in.



UNIVERSAL
FITMENT
GUIDE



FINISH OPTIONS (-xx)

Add finish option number to end of part number for desired finish. (ex: IC284006-13)

Part #	Finish
14	#8 304 Polished Stainless Steel
21	Smooth Aluminum



PRODUCT INFORMATION

Part #	Product	Fitment
IC991001-xx	12 in. Filler Section	See QR Code
IC991002-xx	14 in. Filler Section	See QR Code
IC991003-xx	16 in. Filler Section	See QR Code
IC991004-xx	18 in. Filler Section	See QR Code
IC991005-xx	20 in. Filler Section	See QR Code
IC991006-xx	22 in. Filler Section	See QR Code
IC991007-xx	24 in. Filler Section	See QR Code
IC991008-xx	12 in. On-Top Airline Box	See QR Code
IC991009-xx	18 in. Recessed Airline Box with Trailer Air & (1) 7-Way Hook-Up	See QR Code
IC991010-xx	20 in. Recessed Tool Box	See QR Code
IC991011-xx	18 in. Recessed Air Box with Small Airline Box - Trailer Air & (1) 7-Way	See QR Code
IC991012-xx	18 in. Recessed Airline Box with Trailer Air & (2) 7-Way Hook-Ups	See QR Code
IC991013-xx	18 in. Recessed Airline Box with Trailer Air, (1) 7-Way & (1) 4/6-Way Hook-Up	See QR Code
IC991014-xx	18 in. Recessed Airline Box with Trailer Air, (1) 7-Way & Hydraulic Hook-Up	See QR Code

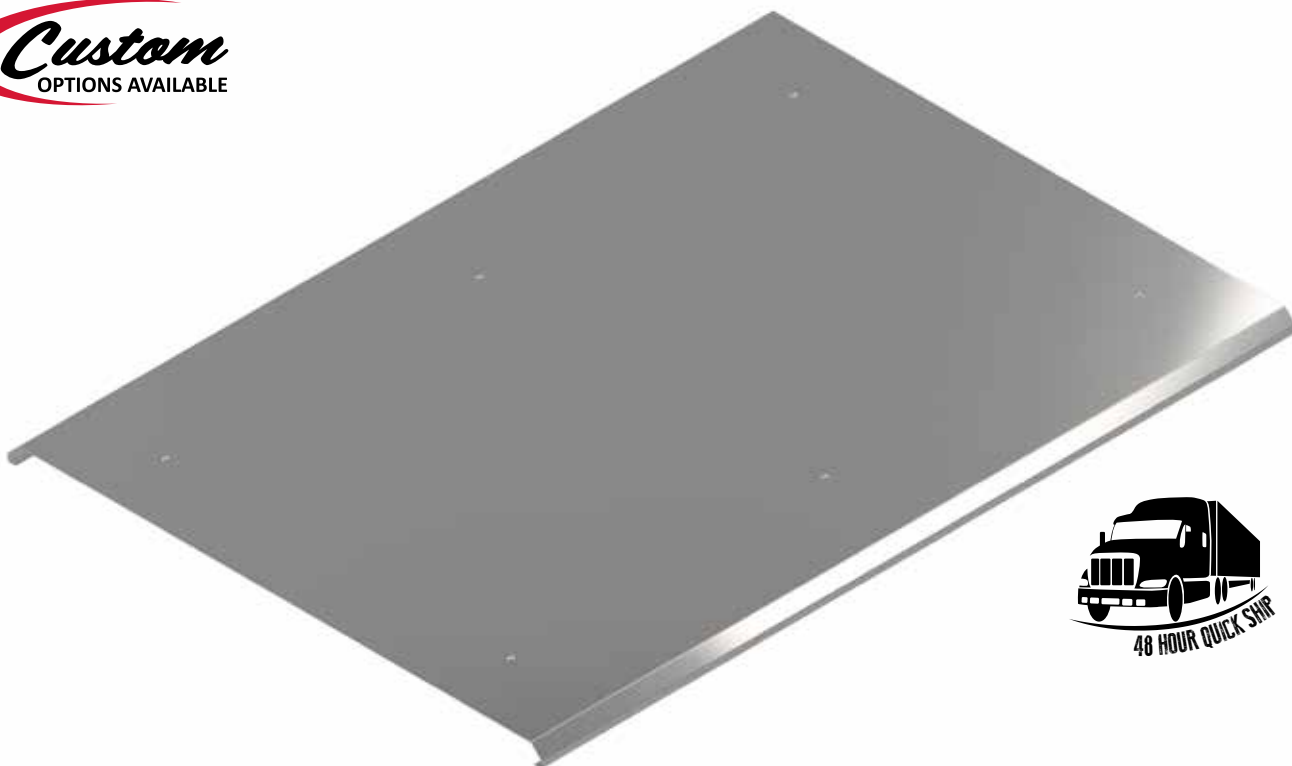
ON-TOP DECK PLATES

Universal On-Top Deck Plates by Iowa Customs are master crafted for superior fit ability and to mount to virtually any application. Our top quality materials ensure years of maintenance free use.

- Universal Fit To Any 34 in. Wide Deck Plate



UNIVERSAL
FITMENT
GUIDE



PRODUCT INFORMATION

Part #	Product	Fitment
IC992001-xx	36 in. On-Top Deck Plate	See QR Code
IC992002-xx	48 in. On-Top Deck Plate	See QR Code
IC992003-xx	60 in. On-Top Deck Plate	See QR Code
IC992004-xx	72 in. On-Top Deck Plate	See QR Code
IC992005-xx	84 in. On-Top Deck Plate	See QR Code
IC992006-xx	96 in. On-Top Deck Plate	See QR Code

FINISH OPTIONS (-xx)

Add finish option number to end of part number for desired finish.
(ex: IC992001-14)

Part #	Finish
14	#8 304 Polished Stainless Steel
21	Paintable Stainless Steel

REAR CENTER PANELS

The Iowa Customs Rear Center Panels are expertly manufactured ensuring superior quality. The panels come with our specially designed Gusset System that strengthens the Rear Center Panel along with gasketed back plate to keep the elements out! Multiple configuration options available. All Rear Center Panels DO NOT come with the lights.

AVAILABLE IN 16 IN. & 20 IN.



IC983009

16 in. Drop with
(5) 4 in. Lights



IC983010

16 in. Drop with (3) ¾ in. Light
Holes & (5) 4 in. Light Holes



IC983011

16 in. Drop with (5) ¾ in. Lights
& (4) 4 in. Light Holes



IC983006

20 in. Drop with
(5) 4 in. Lights



IC983007

20 in. Drop with (3) ¾ in. Light
Holes & (5) 4 in. Light Holes



IC983008

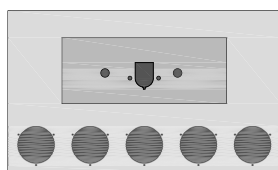
20 in. Drop with (5) ¾ in.
Lights & (4) 4 in. Light Holes



UNIVERSAL
FITMENT
GUIDE

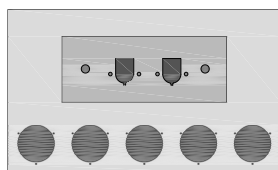


AVAILABLE IN 20 IN.



IC983002

20 in. Drop with Trailer Air, (1)
7-Way & (5) 4 in. Light Holes



IC983004

20 in. Drop with Trailer Air, (2)
7-Ways & (5) 4 in. Light Holes



PRODUCT INFORMATION

Fitment: See QR Code

Part #	Panel Details	Information
IC983001-xx		Trailer Air, (1) 7-Way & No Lights
IC983002-xx	33 in. W x 20 in. Drop Rear Center Panel With Airline Box	Trailer Air, (1) 7-Way & (5) 4 in. Round Light Holes
IC983003-xx		Trailer Air, (2) 7-Ways & No Lights
IC983004-xx		Trailer Air, (2) 7-Ways & (5) 4 in. Round Light Holes
IC983000-xx		Blank - No Light Holes
IC983005-xx	33 in. W x 20 in. Drop Rear Center Panel	(4) 4 in. Light Holes
IC983006-xx		(5) 4 in. Light Holes
IC983007-xx		(3) ¾ in. Lights & (5) 4 in. Round Light Holes
IC983008-xx		(5) ¾ in. Lights & (4) 4 in. Round Light Holes
IC983009-xx	33 in. W x 16 in. Drop Rear Center Panel	(5) 4 in. Light Holes
IC983010-xx		(3) ¾ in. Lights & (5) 4 in. Round Light Holes
IC983011-xx		(5) ¾ in. Lights & (4) 4 in. Round Light Holes
IC983012-xx		(4) 4 in. Light Holes
IC983050-xx	33 in. W x 20 in. Drop Rear Center Panel	(4) 4 in. Light Holes & (4) 4 in. Light Holes In Back Panel
IC983051-xx		(5) 4 in. Light Holes & (4) 4 in. Light Holes In Back Panel

FINISH OPTIONS (-xx)

Add finish option number to end of
part number for desired finish.

(ex: IC983001-14)

Part #	Finish
14	#8 304 Polished Stainless Steel
21	Paintable Finish

REVERSE T-BARS

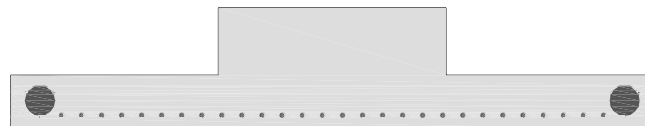


Reverse T-Bars from Iowa Customs are expertly crafted and manufactured from 14GA #8 304 Non-Directional Polished Stainless Steel. Our T-Bars are engineered with internal structure to help eliminate fatigue areas. Includes Gasketed Rear Access Panel, Gussets and Integrated Flap Hangers.



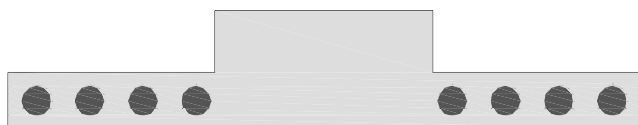
Reverse T-Bar with (6) 4 in. Round Light Holes

IC975022-14



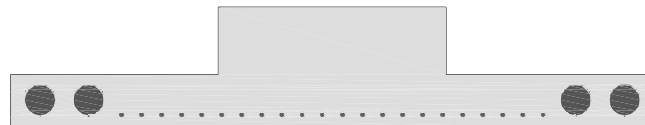
Reverse T-Bar with (2) 4 in. and (28) 3/4 in. Round Light Holes

IC975025-14



Reverse T-Bar with (8) 4 in. Round Light Holes

IC975021-14



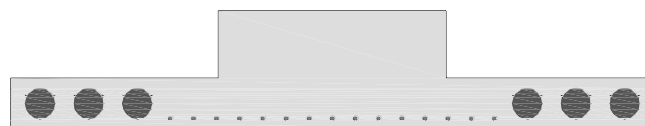
Reverse T-Bar with (4) 4 in. and (22) 3/4 in. Round Light Holes

IC975026-14



Reverse T-Bar with (10) 4 in. Round Light Holes

IC975023-14



Reverse T-Bar with (6) 4 in. and (16) 3/4 in. Round Light Holes

IC975027-14



Reverse T-Bar with (12) 4 in. Round Light Holes

IC975020-14



Reverse T-Bar with (6) 4 in. Round Light Holes and Recessed Airline Box with Trailer Air & (1) 7-Way

IC975028-14



UNIVERSAL
FITMENT
GUIDE



PRODUCT INFORMATION

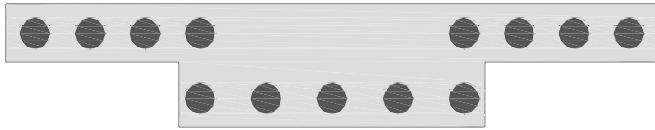
Part #	Light Holes	Dimensions	Finish	Fitment
IC975020-14	(12) 4 in. Round Light Holes	96 in. L x 18 in. H x 3 in. D	#8 304 Polished Stainless Steel	See QR Code
IC975021-14	(8) 4 in. Round Light Holes	96 in. L x 18 in. H x 3 in. D	#8 304 Polished Stainless Steel	See QR Code
IC975022-14	(6) 4 in. Round Light Holes	96 in. L x 18 in. H x 3 in. D	#8 304 Polished Stainless Steel	See QR Code
IC975023-14	(10) 4 in. Round Light Holes	96 in. L x 18 in. H x 3 in. D	#8 304 Polished Stainless Steel	See QR Code
IC975025-14	(2) 4 in. and (28) 3/4 in. Round Light Holes	96 in. L x 18 in. H x 3 in. D	#8 304 Polished Stainless Steel	See QR Code
IC975026-14	(4) 4 in. and (22) 3/4 in. Round Light Holes	96 in. L x 18 in. H x 3 in. D	#8 304 Polished Stainless Steel	See QR Code
IC975027-14	(6) 4 in. and (16) 3/4 in. Round Light Holes	96 in. L x 18 in. H x 3 in. D	#8 304 Polished Stainless Steel	See QR Code
IC975028-14	(6) 4 in. Round Light Holes and Recessed Airline Box with Trailer Air & (1) 7-Way	96 in. L x 18 in. H x 3 in. D	#8 304 Polished Stainless Steel	See QR Code

REAR T-BARS



UNIVERSAL

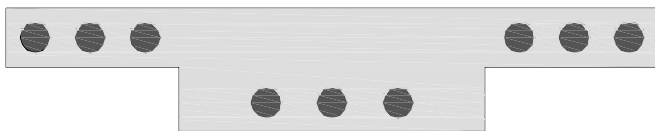
Rear T-Bars From Iowa Customs are expertly crafted and manufactured from 14GA #8 304 Non-Directional Polished Stainless Steel. Our T-Bars are engineered with internal structure to help eliminate fatigue areas. Includes Gasketed Rear Access Panel, Gussets and Integrated Flap Hangers.



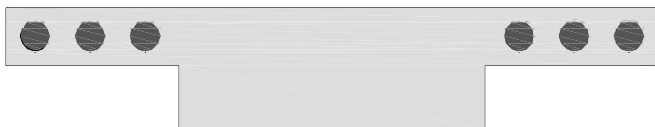
Rear T-Bar with (13) 4 in. Round Light Holes
IC975001-14



Rear T-Bar with (8) 4 in. Round Light Holes
IC975004-14



Rear T-Bar with (9) 4 in. Round Light Holes
IC975002-14



Rear T-Bar with (6) 4 in. Round Light Holes
IC975003-14



**Rear T-Bar with (6) 4 in. Round Light Holes
and Recessed Airline Box with Trailer Air & (1) 7-Way**
IC975005-14



UNIVERSAL
FITMENT
GUIDE



PRODUCT INFORMATION

Part #	Light Holes	Dimensions	Finish	Fitment
IC975001-14	(13) 4 in. Round Light Holes	96 in. L x 18 in. H x 3 in. D	#8 304 Polished Stainless Steel	See QR Code
IC975002-14	(9) 4 in. Round Light Holes	96 in. L x 18 in. H x 3 in. D	#8 304 Polished Stainless Steel	See QR Code
IC975003-14	(6) 4 in. Round Light Holes	96 in. L x 18 in. H x 3 in. D	#8 304 Polished Stainless Steel	See QR Code
IC975004-14	(8) 4 in. Round Light Holes	96 in. L x 18 in. H x 3 in. D	#8 304 Polished Stainless Steel	See QR Code
IC975005-14	(6) 4 in. Round Light Holes and Recessed Airline Box with Trailer Air & (1) 7-Way	96 in. L x 18 in. H x 3 in. D	#8 304 Polished Stainless Steel	See QR Code

HUB COVERS

Specifically designed for Dana Spicer Drive Axle Hub Covers, these Iowa Customs products are built to last. Designed and crafted from 304 Corrosion Resistant #8 Non-Directional Stainless Steel. Available in different hole configurations. Please refer to our fitment guide for correct fitment.

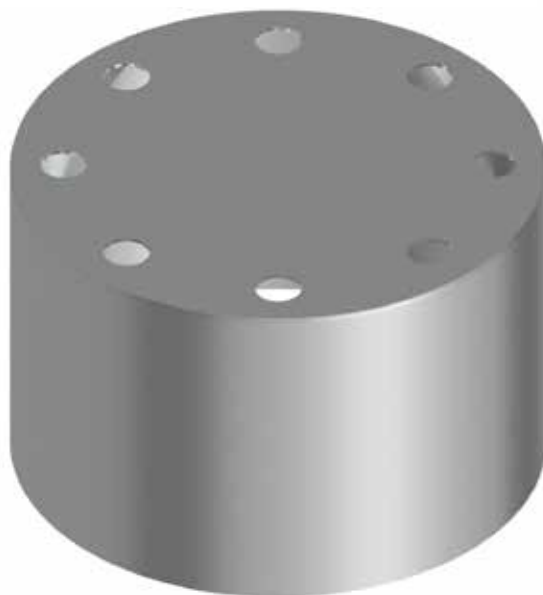
304 CORROSION RESISTANT
304 Stainless Steel | Rust Free | Weather Proof



IC982001-14



IC982002-14



IC982003-14



UNIVERSAL
FITMENT
GUIDE



PRODUCT INFORMATION

Fitment: Dana Spicer Hub Only

Part #	Product	Hole Shape	Cover Details	Finish
IC982001-14	Hub Cover	Round	(8) Axle Plastic Flat Top Push On Nut Cover - Sold Individually	#8 304 Polished Stainless Steel
IC982002-14	Hub Cover	Oval	(8) Axle Plastic Flat Top Push On Nut Cover - Sold Individually	#8 304 Polished Stainless Steel
IC982003-14	Hub Cover	Blank	(8) Axle Plastic Flat Top Push On Nut Cover - Sold Individually	#8 304 Polished Stainless Steel

FRONT DRIVE AXEL FILLER PANELS

Iowa Customs Front Drive Axel Filler Panel was specifically designed to create that custom filled in look in front of the Front Drive Axel but without the custom cost. Installation is a breeze with our specially designed mounting kit. Many light designs are available and these are expertly crafted from Corrosion Resistant #8 304 Stainless Steel.

UNIVERSAL



UNIVERSAL
FITMENT
GUIDE



PRODUCT INFORMATION

Fitment: See QR Code

Part #	Product	Size	Front Lights	Back Panel Lights	Bottom Lights
IC983013-xx	Front Drive Axel Filler Panels	33 in. x 16 in.	(5) - 4 in. Light Holes	(4) - 4 in. Light Holes	(11) 3/4 in. Light Holes
IC983014-xx	Front Drive Axel Filler Panels	33 in. x 16 in.	(5) - 4 in. Light Holes	No Light Holes	No Light Holes
IC983015-xx	Front Drive Axel Filler Panels	33 in. x 16 in.	(4) - 4 in. Light Holes	No Light Holes	No Light Holes
IC983016-xx	Front Drive Axel Filler Panels	33 in. x 16 in.	(5) - 4 in. Light Holes	(4) - 4 in. Light Holes	No Light Holes
IC983017-xx	Front Drive Axel Filler Panels	33 in. x 16 in.	(4) - 4 in. Light Holes	(4) - 4 in. Light Holes	No Light Holes
IC983018-xx	Front Drive Axel Filler Panels	33 in. x 16 in.	No Light Holes	No Light Holes	No Light Holes

FINISH OPTIONS (-xx)

Add finish option number to end of part number for desired finish. (ex: IC983016-14)

Part #	Finish
14	#8 304 Polished Stainless Steel
21	Paintable Stainless Steel

304 CORROSION RESISTANT
304 Stainless Steel | Rust Free | Weather Proof

STEP PLATES & INSERTS

Our patented and unique Step Plate System makes creating a custom look easy. Simply mix and match various finishes of both step plates and inserts to create that custom combo!

SERIES ONE



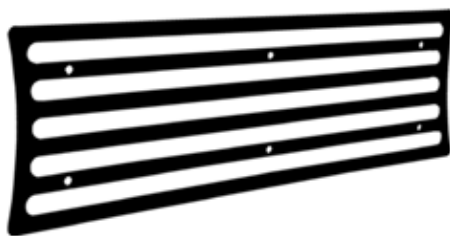
STAINLESS STEEL



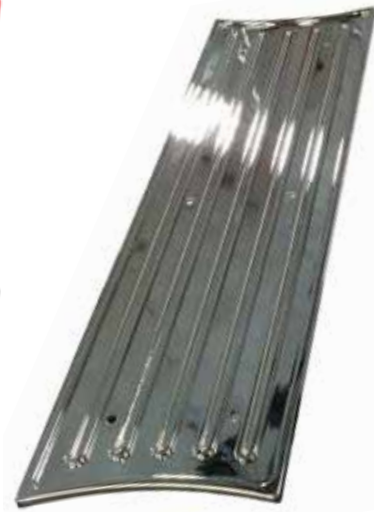
RED BARON



PO BLUE



GLOSS BLACK



CHROME



UNIVERSAL
FITMENT
GUIDE

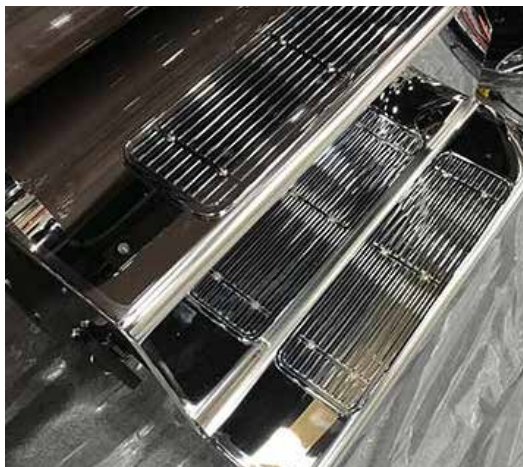
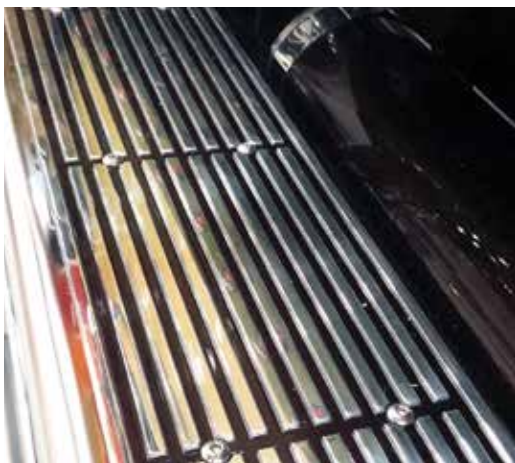


SERIES ONE INFORMATION

Part #	Product	Size	Series	Design	Fitment
IC997001-xx	Step Plate	6 in. x 12 in.	Series 1	Concave Ends	See QR Code
IC997002-xx	Step Plate	6 in. x 20 in.	Series 1	Concave Ends	See QR Code
IC997003-xx	Step Plate	6 in. x 30 in.	Series 1	Concave Ends	See QR Code
IC997004-xx	Step Plate	4 in. x 20 in.	Series 1	Concave Ends	See QR Code
IC996001-xx	Insert	6 in. x 12 in.	Series 1	Concave Ends	See QR Code
IC996002-xx	Insert	6 in. x 20 in.	Series 1	Concave Ends	See QR Code
IC996003-xx	Insert	6 in. x 30 in.	Series 1	Concave Ends	See QR Code
IC996004-xx	Insert	4 in. x 20 in.	Series 1	Concave Ends	See QR Code

STEP PLATES & INSERTS

UNIVERSAL



UNIVERSAL
FITMENT
GUIDE

SERIES TWO



GLOSS BLACK



CRYSTAL WHITE



RED BARON



BRUSHED STAINLESS STEEL



PO BLUE



NON-DIRECTIONAL POLISHED
STAINLESS STEEL



BILLET
ALUMINUM

SERIES TWO INFORMATION

Part #	Product	Size	Series	Design	Fitment
IC997021-xx	Step Plate	6 in. x 12 in.	Series 2	Rectangle	See QR Code
IC997022-xx	Step Plate	6 in. x 20 in.	Series 2	Rectangle	See QR Code
IC997023-xx	Step Plate	6 in. x 30 in.	Series 2	Rectangle	See QR Code
IC997024-xx	Step Plate	3 in. x 20 in.	Series 2	Rectangle	See QR Code

Part #	Product	Size	Series	Design	Fitment
IC996021-xx	Insert	6 in. x 12 in.	Series 2	Rectangle	See QR Code
IC996022-xx	Insert	6 in. x 20 in.	Series 2	Rectangle	See QR Code
IC996023-xx	Insert	6 in. x 30 in.	Series 2	Rectangle	See QR Code
IC996024-xx	Insert	3 in. x 20 in.	Series 2	Rectangle	See QR Code

FINISH OPTIONS (-xx)

Add finish option number to end of part number for desired finish.
(ex:IC997001-13)

Part #	Step Plate Finish
11	Billet Aluminum
12	Chrome
15	Gloss Black

Part #	Insert Finish
13	Brushed Stainless Steel
14	#8 304 Polished Stainless Steel
15	Gloss Black
16	Red Baron
17	Crystal White
18	PO Blue

STORAGE SOLUTIONS

We have universal storage kit options as well. They come in many different sizes and drawer configurations to fit nearly ANY truck! Available in two different widths: 14 in. and 15 1/4 in.



UNIVERSAL
FITMENT
GUIDE



PRODUCT INFORMATION

Part #	Drawers	Dimensions	Fitment
IC990006-xx	5 Drawers	14 in. W x 38 in. T	See QR Code
IC990007-xx	5 Drawers with Table Top	14 in. W x 38 in. T	See QR Code
IC990009-xx	1 Drawer	15-1/4 in. W x 6-1/2 in. T	See QR Code
IC990010-xx	2 Drawers	15-1/4 in. W x 14 in. T	See QR Code
IC990011-xx	3 Drawers	15-1/4 in. W x 21 in. T	See QR Code
IC990012-xx	3 Drawers	15-1/4 in. W x 24 in. T	See QR Code
IC990013-xx	4 Drawers	15-1/4 in. W x 29-1/2 in. T	See QR Code
IC990016-xx	1 Drawer	15-1/4 in. W x 10 in. T	See QR Code

FINISH OPTIONS (-xx)

Add finish option number to end of part number for desired finish. (ex: IC990006-13)

Part #	Finish
13	Brushed Stainless Steel
15	Gloss Black

MICROWAVE & INVERTER KITS



UNIVERSAL

Universal Fitment allows installation of a Microwave and Inverter virtually anywhere in your truck. Kit comes with Microwave, Microwave Hanging Bracket, Inverter and Inverter Installation Kit.



UNIVERSAL
FITMENT
GUIDE



Includes
Inverter Installation Kit



PRODUCT INFORMATION

Part #	Product	Includes	Finish	Fitment
IC984030-15	Microwave Kit	Microwave, Hanging Bracket, Inverter, and Installation Kit	Black	See QR Code

LIGHT BRACKETS

Universal Light Brackets for light installation anywhere! Iowa Customs Beacon Light Bracket, is expertly crafted from 304 Corrosion resistant #8 Finish Stainless Steel and adds another level of customization to your rig. Please refer to our fitment guide for correct fitment.

PRODUCT INFORMATION

Part #	Product	Finish	Fitment
IC966050-14	Beacon Light Bracket	#8 304 Polished Stainless Steel	See QR Code



FRAME LIGHT BRACKETS

Iowa Customs NEW Universal Light Brackets are sure to light up your rig! Each bracket is expertly crafted from Corrosion Resistant 14GA #8 304 Stainless Steel and are designed in a variety of configurations utilizing either Watermelon or ¾ in. Lights! Direct or In-Direct Lighting packages are available to provide your rig with even underglow! Mounting is a breeze! Stainless NutSerts and included hardware securely fasten the Universal Light Brackets to your single or double framed truck!



UNIVERSAL
FITMENT
GUIDE



PRODUCT INFORMATION

Part #	Description	Light Information	Fitment
IC994007-14	45° Downward Facing Underglow Light Bracket	(1) Watermelon Light	See QR Code
IC994008-14	45° Downward Facing Underglow Light Bracket	(2) Watermelon Light	
IC994009-14	45° Downward Facing Underglow Light Bracket	(1) 4 in. Light	
IC994010-14	45° Downward Facing Underglow Light Bracket	(1) 3/4 in. Light	
IC994011-14	45° Downward Facing Underglow Light Bracket	(2) 3/4 in. Light	
IC994012-14	Outward Facing Frame Light Bracket	(1) Watermelon Light	
IC994013-14	Outward Facing Frame Light Bracket	(1) 3/4 in. Light	
IC994014-14	Direct Downward Facing Underglow Light Bracket	(1) 2 in. Light	

REAR OEM TAIL LIGHT BRACKETS

The Iowa Customs Rear Dual Tail Light Brackets are manufactured from 14GA #8 Non-Directional Polished Stainless Steel. Designed to be an OEM replacement, packaged with driver and passenger side brackets.

- Lights, grommets and wiring NOT included
- Installs with existing hardware



PRODUCT INFORMATION

Part #	Product	Finish	Fitment
IC983200-14	Dual 4 in. Tail Light Hole Rear Bracket	#8 304 Polished Stainless Steel	See QR Code